

# ConT<sub>E</sub>Xt

title : ConT<sub>E</sub>Xt User Module  
subtitle : Fullpage documents  
author : Wolfgang Schuster  
date : December 27, 2010



## Introduction

The `fullpage` module is a port of the  $\text{\LaTeX}$  package with the same name. The module was written after Mohammed Bana asked on the  $\text{CONTEX}\text{T}$  mailing list if a module with the same function as the  $\text{\LaTeX}$  package is available for  $\text{CONTEX}\text{T}$ .

The purpose of the module is to easily change the margins of all four margins of the page to the same value without the need of `\setuplayout` in the document.



## Usage

To use the module you have to load it with the `\usemodule` command. Parameters for the module can be either set with the `\setupfullpage` command or as argument to `\usemodule` when you load the module for your document.

A example how to use the module is:

```
\usemodule[fullpage][style={cm,empty}]

\starttext
\input knuth
\stoptext
```

You can give for `\usemodule` the same argument as you can give to `\setupfullpage`, which has the following syntax:

```
\setupfullpage [...,*=.,...]
```

\*   style   = in cm margin plain headings empty none  
      margin = DIMENSION

The meaning of the values for the “style” key is:

<b>in</b>	set the margins to 1in
<b>cm</b>	set the margins to 1.5cm
<b>margin</b>	set the margins to the “margin” value
<b>plain</b>	no header and narrow footer with 0.5cm
<b>headings</b>	narrow header and footer with 0.5cm
<b>empty</b>	no header and footer

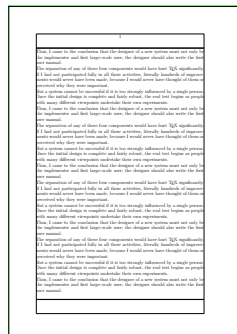
The “margin” value is only usefull when you use also the margin key which expects a dimension as argument because it’s default value is 0pt which result otherwise in no margins at all. You can see the result of all combinations of the style argument at page 5, the examples for the margin argument use a value of 4cm for the margin key.



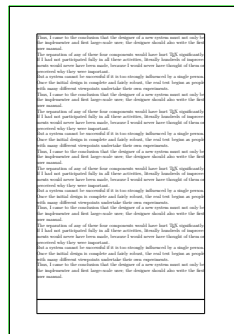
## Examples



none



headings



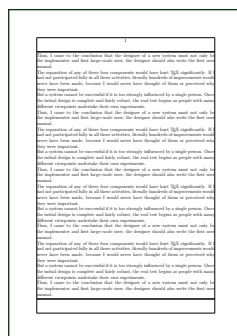
plain



empty



in



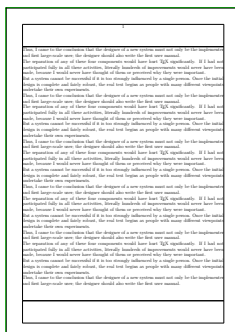
in + headings



in + plain



in + empty



cm



cm + headings



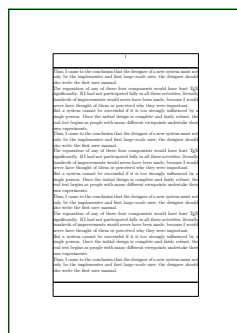
cm + plain



cm + empty



margin



margin + headings



margin + plain



margin + empty

